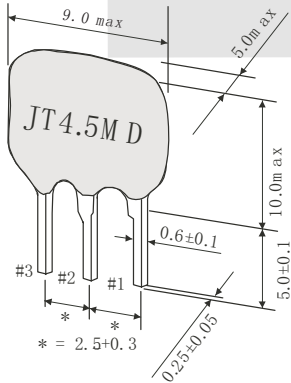


Ceramic Discriminators Series

KLS14-JT4.5M Ceramic Discriminators For TV Series

Features

JT_M series ceramic discriminators are widely used in telecommunication, cable, radar, TV set, tape recorder, video camera and other electronic products due to its lower price and stable performances.



Unit:mm

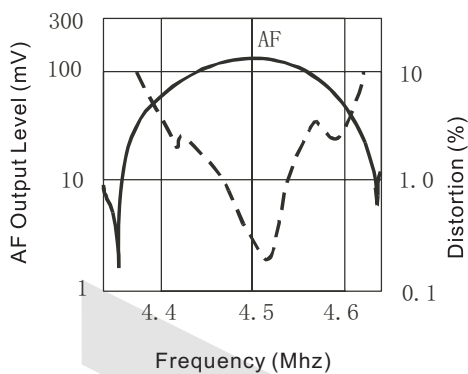
PIN	FUNCTION
#1	Input
#2	Ground
#3	Output



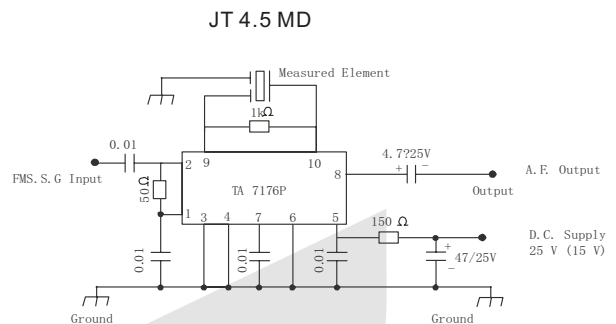
XIV

Part Number	Demodulation Output fo (mV) Min	Demodulation 3db Bandwidth (KHz) Min	Distortion Factor fo (%) Max	Applicable IC
JT4.5MD	≥100	≥ 50	≤3	TA7176P
JT5.5MD	≥100	≥ 50	≤3	TA7176P
JT6.0MD	≥100	≥ 50	≤3	TA7176P
JT6.5MD	≥100	≥ 50	≤3	TA7176P

FREQUENCY CHARACTERISTICS FOR MT4.5MD



TEST CIRCUIT



ORDER INFORMATION

